

## STEP THREE

Remove the metal mounting plate on the SmartRange Sensor Unit.

*Note: The Sensor alarm will sound. This is normal.*

Peel off the white paper backing and press the metal plate to the Mounting Bracket for at least 30 seconds. (Image 5)

*Note: It is important to press the metal plate to the Mounting Bracket for at least 30 seconds to ensure that the adhesive backing has made a strong connection to the Mounting Bracket.*

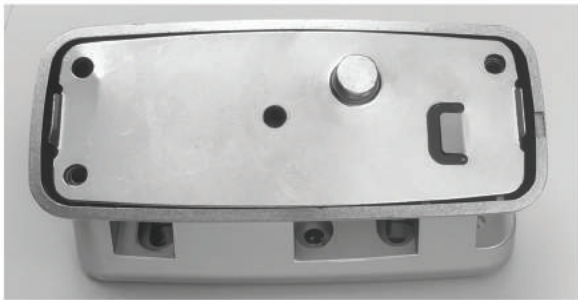


Image 5

## STEP FOUR

Clean the rangehood surface where the Mounting Bracket will be located. It is important that this area is free of any grease or debris. Peel the white paper backing from the bottom of the Mounting Bracket and press the whole unit onto the Rangehood. Again, press Mounting Bracket to the rangehood or OTR for at least 30 seconds.

## STEP FIVE

Attach the SmartRange Sensor to the metal sensor plate. Ensure that the sensor light on the SmartRange sensor faces outwards (the user). (Image 6)



Image 6

### **Congratulations!**

SmartRange is now ready for calibration and/or testing.

If you have additional questions or require tech support, please contact us at 1-800-433-6026 or [info@pioneeringtech.com](mailto:info@pioneeringtech.com)

**SMARTRANGE™**  
FIRE PREVENTION PRODUCTS



## MOUNTING BRACKET INSTALLATION GUIDE

*Rangehood or OTR Installation*

The following Mounting Bracket instructions are designed to facilitate installation of the SmartRange Sensor on a rangehood, or an over the range microwave oven (OTR), if mounting the SmartRange Sensor alone would prevent it from being easily seen or used.



Never Leave  
Cooking Unattended.

 **PioneeringTech.com**  
PROTECTING PEOPLE & PROPERTY

## WHAT YOU'LL NEED:

To install the SmartRange Mounting Bracket ensure that you have the following components (Image 1):

- **1 plastic Mounting Bracket**
- **1 metal Mounting Bracket plate**
- 1 bag of screws/inserts containing the following:
  - 2 plastic wall anchors
  - 2 large Phillips screws (for use with plastic wall anchors)
  - **1 medium Phillips screw** (to lock the Mounting Bracket angle)
  - 2 smaller Phillips screws
  - **3 small Philips screws** (to attach the metal Mounting Bracket plate) (Only two of these screws are needed.)

Note: Only those items in **bold** will be needed for this installation.

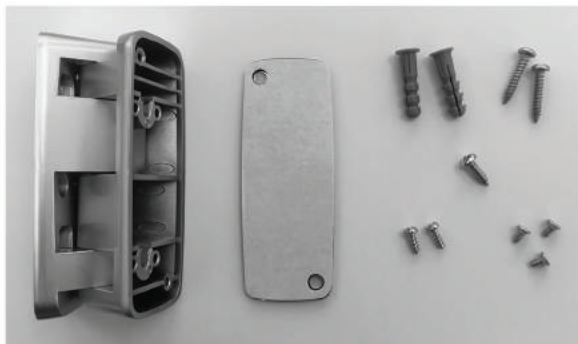


Image 1

## STEP ONE

Position the metal Mounting Bracket plate over the bottom of the Mounting Bracket (Image 2) so that the white paper is facing up (you) and the two corner holes align with the corner holes in the Mounting Bracket. Secure the mounting bracket plate using 2 of the smallest sized Phillips screws provided. (Image 3)

NOTE: Do NOT remove the paper backing at this stage.

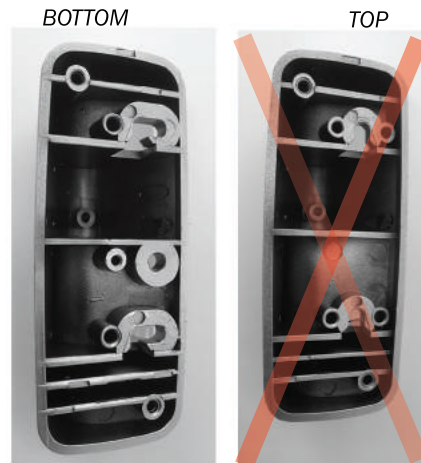


Image 2

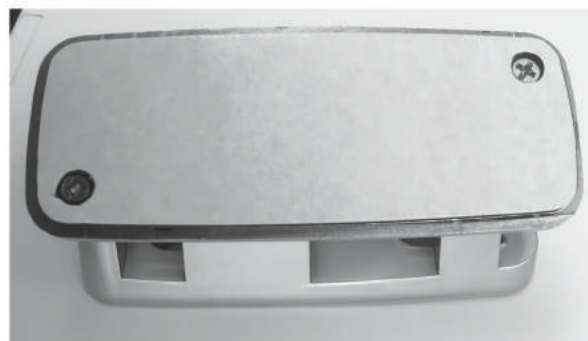


Image 3

## STEP TWO

Determine SmartRange Mounting Bracket location under the rangehood / OTR. Location should be on a flat surface and not interfere with any rangehood lights, filters or switches. Adjust the Mounting Bracket so it is pointing towards the center of the stove top.

Note: The Mounting Bracket does not move equally in either direction, it may be necessary to rotate the bracket 180 degrees to get a steeper angle.

After determining correct location and angle, it is important to lock the angle with the 1 medium Philips screw.

Insert the screw into the deep, center hole of the remaining open side of the Mounting Bracket (top). (Image 4) Drive the screw all the way, until it sits snug. The Mounting Bracket angle is now locked.

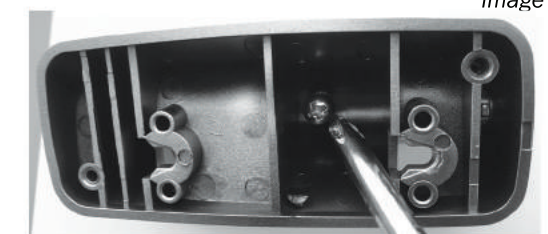


Image 4